



Amare Beach · Ibiza



PRODUCT DESCRIPTION

Sisal Rope Curve "Custom fit"

Composition	100% Sisal
Standard size	Max. Width: 400 cms
Weight	1300 gr/sqm
Thickness	2 mm
Backing	Jute fabric
Application	Residential, Contract
Optional finishing	Stain resistant, Fire resistant

PROJECT DESCRIPTION

Amare beach Hotel Ibiza

Location · Localización	Ibiza, Spain
Architect · Arquitecto	Verum Hotel Development
Company · Empresa	Amare Beach Hotel
Naturtex Product Producto Naturtex	Sisal Rope Curve "Custom fit"
Application	Area rugs



Amare Beach · Ibiza



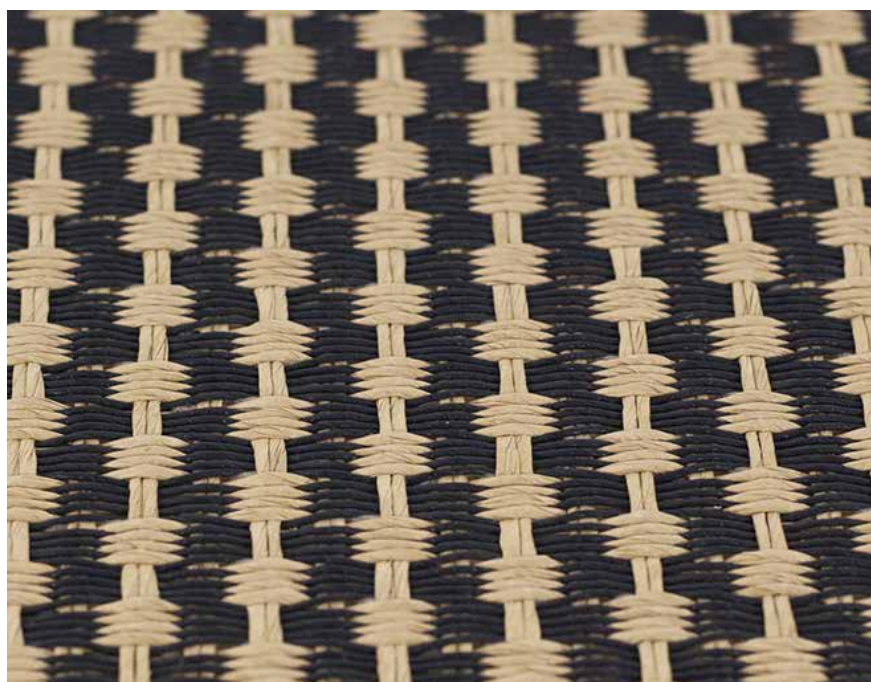
PRODUCT 2 DESCRIPTION

Tanzania

Composition	100% Sisal
Standard size	Max. Width: 400 cm
Weight	2.800 gr/sqm
Thickness	9 mm
Backing	Latex
Certificates	UNE 23.727-90 1R test result M2 (Fire rating)
Application	Residential, contract, intensive, carpet, runners and stairs
Optional finishing	Stain resistant, Fire resistant



Amare Beach · Ibiza



PRODUCT 3 DESCRIPTION

Tatami Ironwood

Composition	Wood fiber · Papel 84% Cotton · Algodón 16 %
Standard size	Max. Width: 300 cm
Weight	3000 gr/sqm
Thickness	5 mm
Backing	Jute
Certificates	UNE EN 13501-1:2007 test result: CflS1 (Fire rating) UNE EN ISO 105-B02:2001 test result: 5 (Light fastness)
Application	Residential, contract, intensive, carpet, runners and stairs
Optional finishing	Stain resistant, Fire resistant

