

**Metal weaves**

Installation advises

 **NATURTEX**

# Installation Advises

### APPLICATION:

- Panels
- Glued directly to wall

### TYPE OF INSTALLATION:

- Panels with uncovered edges
- Panels with covered edges

### TYPE OF BASE:

- Wood
- Plaster board
- Expanded PVC

### USEFUL TOOLS:

- Scissors
- Metric tape
- Metal Ruler
- Glueing roller
- Spray pistol
- Adhesive tape
- Cutter
- Industrial stapler
- Pencil or marker

### TYPES OF GLUE:

- Transparent neoprene glue (for spray gun)
- Double side adhesive (wide)

# Installation Advises

### Panels with covered edges



#### Cutting process:

Mark the cutting lines considering the extra needed margin to finish the panel perfectly.

Careful : It is important to respect the warp and weft of the weave.

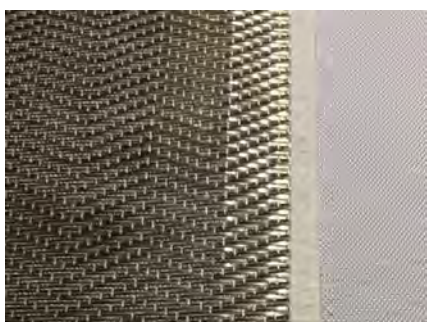
Put a tape at the selected marked area and proceed cutting. In order to cut, sharp scissors should work, but if you encounter problems you can also use a small BOSCH circular cutter.

When cutting, always leave the tape over the fabric. This will help keeping all the yarns together in the perimeter, and will avoid that most external yarns come loose.



#### Important:

Before fixing your metal fabric, you can consider glue a fabric backing . This is specially interesting for those metal fabrics which are really open, and will not give a good result if we try to glue them on solid bases.



# Installation Advises

## Panels with covered edges



### Preparation for the glueing

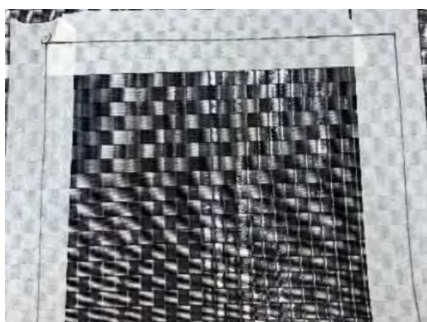
Make sure both the covering and the base are free of any dust or dirt and that they have not been damaged or show any marks of impact.

Put the panel over the back of the fabric. Make sure you align correctly the external edges of the panel with the warp and weft lines.

Proceed with the marker to draw clearly the 4 sides of the external perimeter.

Use the marker to draw the lines on both the base and the covering, in order to identify the good position of both of them.

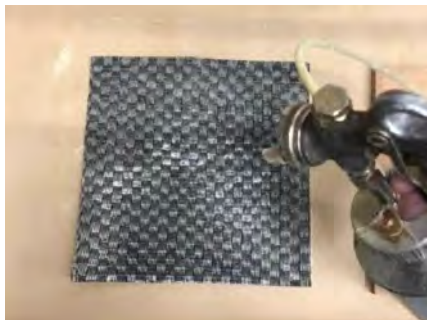
Proceed cutting.



## Metal weaves

# Installation Advises

### Panels with covered edges



#### Glueing process:

Apply the neoprene glue using the spray pistol (this is the most suitable as it spreads the glue in a regular way. This must be done over the base as well as over the metal covering.

For an optimal glueing it is better to do this process twice, to avoid too much absorption of the glue specially by the wood.

Please the homogeneity of the glue applied, before proceeding to other steps.

Leave to dry for some minutes. Surfaces must be dry to the touch.

Put the panel over the covering on the reference lines marked previously.

Press the base firmly against the back of the woven.

Apply the roller over all the surface in order to eliminate any possible air bubbles. First do this carefully to avoid any fabric folding and then firmly to finish glueing the covering to the panel. Apply from the center to the external perimeter.



## Metal weaves



# Installation Advises

### Panels with covered edges



#### Perimeter corners

Glue first your panel in horizontal sense.

Cut the extra material and glue on the back by folding the edges. Use the roller and a hammer if needed to fix the folded material on the back of the panel.

Glue now vertical side and cut leaving 1cm extra of material.

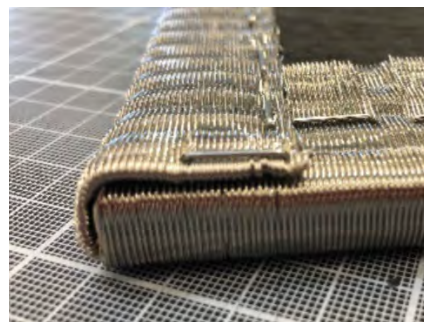
Apply the roller to fix the folded edges and all the perimeter.

Fold the metal covering and glue to side of the panel. Hold strongly so that the metal fabric glues to the side and the back of the panel.

Use the roller on the sides and back of the panel to ensure good fixation.

Use the industrial strapler if wanted to give an extra longlasting fixation.

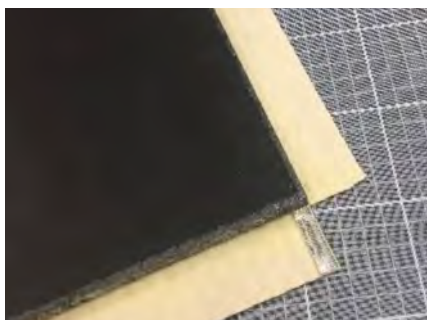
Use the hammer on the corners for optimal finish.



## Metal weaves

# Installation Advises

### Panels with covered edges



#### Another technique

You can also:

Do the cutting on the vertical sides, leaving 1cm extra and fold.

Glue first the folded edges of the horizontal sides and do the same later on with the vertical sides.

Staple over the perimeter to ensure an optimal fixation.

Use the hammer over all the perimeter to flatten the metal material as much as possible.





# Installation Advises

### Panels with uncovered edges

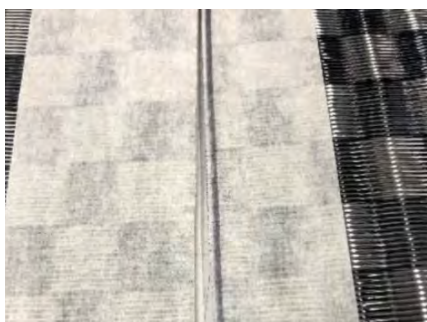


#### Preparation for the cutting

**Important:** Make sure both the covering and the base are free of any dust or dirt and that they have not been damaged or show any impact marks.

Put the panel over the back of the fabric. Make sure you align correctly the external edges of the panel with the warp and weft lines.

Put some paper tape around the perimeter.  
.Draw the lines over the tape to identify the ideal position for the cutting.



#### Cutting:

Cut carefully the fabric following the internal side of the line previously drawn. This way, the covering will be slightly shorter and will not be a problem in further applications of profiles.

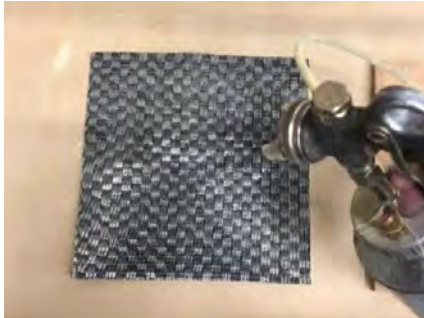


## Metal weaves

# Installation Advises



### Panels with uncovered edges



#### Glueing process:

Apply the neoprene glue using the spray pistol (this is the most suitable as it spreads the glue in a regular way. This must be done over the base as well as over the metal covering.

For an optimal glueing it is better to do this process twice, to avoid too much absorption of the glue specially by the wood.

Please the homogeneity of the glue applied, before proceeding to other steps.

Leave to dry for some minutes. Surfaces must be dry to the touch.

Put the panel over the covering on the reference lines marked previously.

Press the base firmly against the back of the woven .

Apply the roller over all the surface in order to eliminate any possible air bubbles. First do this carefully to avoid any fabric folding and then firmly to finish glueing the covering to the panel. Apply from the center to the external perimeter .



## Metal weaves

# Installation Advises



### Panels with uncovered edges



#### Finishing:

Make sure that all the perimeter is glued strongly.

It is important that the metal coverings are slightly shorter than the panels, which will help us in the application of a profile.

For this kind of solution, we can use a wooden or metal profile, or even a textile profile.

