

**Raffia and Woven fabrics**  
Installation advises



# Raffia and Woven fabrics

## Installation advises



### APPLICATION:

- Panels
- Glued directly to wall
- Wall covering
- Upholstery

### TYPE OF INSTALLATION:

- Panels with uncovered edges
- Panels with covered edges
- Glued directly to wall, like basic wall covering.

### TYPE OF BASE:

- Wood
- Plaster board
- Expanded PVC

### USEFUL TOOLS:

- Scissors
- Metric tape
- Metal Ruler
- Glueing roller
- Spray pistol
- Adhesive tape
- Cutter
- Industrial stapler
- Pencil or marker

### TYPES OF GLUE:

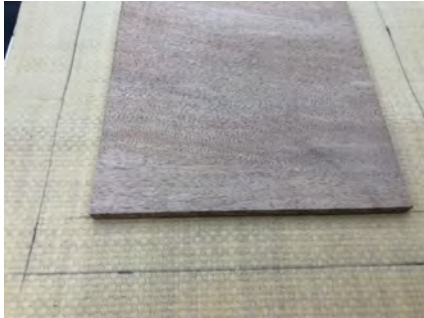
- Transparent neoprene glue (for spray gun)
- Water based glue
- Double side adhesive (wide)
- Glue for floor coverings (PVC coverings)

# Raffia and Woven fabrics

## Installation advises



### Panels with covered edges



#### The cut:

Mark the cutting lines considering the extra needed margin to finish the panel perfectly.

Careful: It is important to respect the warp and weft of the weave.

#### Preparation for the glueing:

Make sure both the covering and the base are free of any dust or dirt and that they have not been damaged or show any marks of impact.

Put the panel over the back of the fabric. Make sure you align correctly the external edges of the panel with the warp and weft lines..

Proceed with the marker to draw clearly the 4 sides of the external perimeter.

Use the marker to draw the lines on both the base and the covering, in order to identify the good position of both of them.

Proceed cutting.



# Raffia and Woven fabrics Installation advises

## Panels with covered edges



### Glueing process:

Apply the neoprene glue using the spray pistol (this is the most suitable as it spreads the glue in a regular way. This must be done over the base as well as over the woven covering.

For an optimal glueing it is better to do this process twice, to avoid too much absorption of the glue specially by the wood..

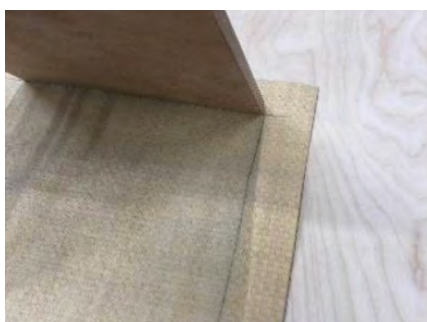
Please the homogeneity of the glue applied, before proceeding to other steps.

Leave to dry for some minutes. Surfaces must be dry to the touch.

Put the panel over the covering on the reference lines marked previously.

Press the base firmly against the back of the woven.

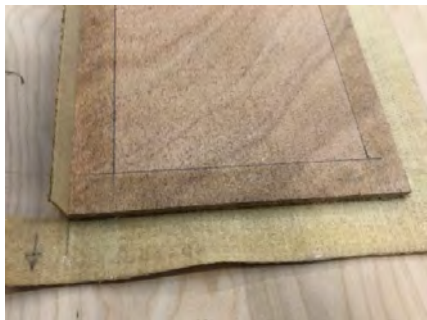
Apply the roller over all the surface in order to eliminate any possible air bubbles. First do this carefully to avoid any fabric folding and then firmly to finish glueing the covering to the panel. Apply from the center to the external perimeter.



## Raffia and Woven fabrics Installation advises



### Panels with covered edges

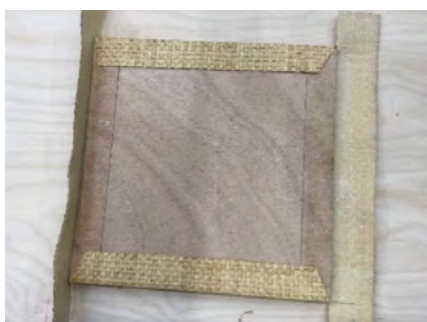


#### Perimeter corners

Glue first your panel in horizontal sense.

Cut the extra material and glue on the back by folding the edges. Use the roller and a hammer if needed to fix the folded material on the back of the panel.

Cut the excess of material.



# Raffia and Woven fabrics

## Installation advises



### Panels with covered edges



#### Perimeter corners:

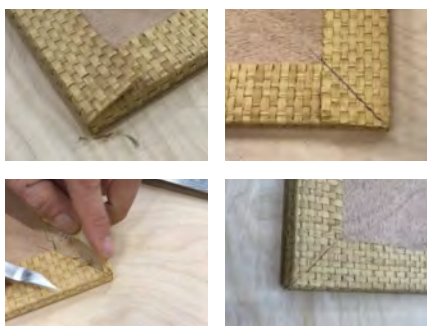
Glue now vertical sides and cut the excess of material.

Glue the covering using the roller to fix it properly.

On the corners overlap the material and cut in 45 degrees.

Take out the excess after the cut

Use the industrial stapler if wanted to ensure a strong fixation.



#### Important:

Make sure you apply enough glue so that the corners fix properly.



# Raffia and Woven fabrics

## Installation advises



### Panels with uncovered edges (neoprene glue)



#### The cutting process :

Mark the cutting lines considering the extra needed margin to finish the panel perfectly.

Careful : It is important to respect the warp and weft of the weave.

#### Preparation for the glueing:

Make sure both the covering and the base are free of any dust or dirt and that they have not been damaged or show any marks of impact.

Put the panel over the back of the fabric. Make sure you align correctly the external edges of the panel with the warp and weft lines..

Proceed with the marker to draw clearly the 4 sides of the external perimeter.

Use the marker to draw the lines on both the base and the covering, in order to identify the good position of both of them.

Proceed cutting.

Proceder al corte.



## Raffia and Woven fabrics Installation advises



### Panels with uncovered edges (neoprene glue)



#### Glueing process:

Apply the neoprene glue using the spray pistol (this is the most suitable as it spreads the glue in a regular way. This must be done over the base as well as over the metal covering.

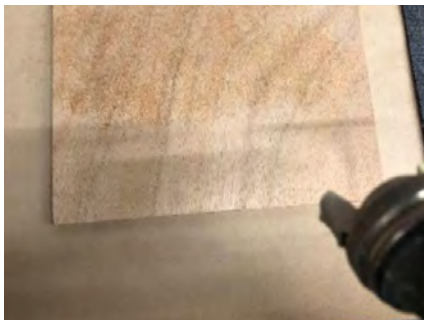
For an optimal glueing it is better to do this process twice, to avoid too much absorption of the glue specially by the wood.

Please the homogeneity of the glue applied, before proceeding to other steps.

Leave to dry for some minutes. Surfaces must be dry to the touch.

Put the panel over the covering on the reference lines marked previously.

Press the base firmly against the back of the woven . Apply the roller over all the surface in order to eliminate any possible air bubbles. First do this carefully to avoid any fabric folding and then firmly to finish glueing the covering to the panel. Apply from the center to the external perimeter .

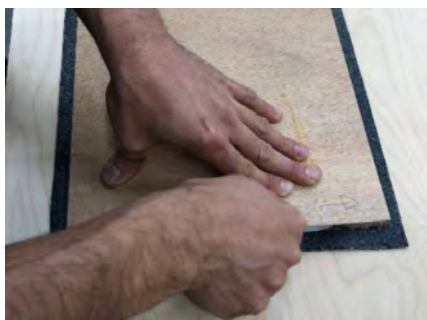




## Raffia and Woven fabrics Installation advises



### Panels with uncovered edges (neoprene glue)



#### The finishing

Make sure that all the perimeter is glued sufficiently and cut with the help of the cutter the remaining excess of covering, following the edge of the base.

It is possible to make an almost invisible joint if you follow exactly the fabric pattern. Some kind of fabrics though, are not completely straight, and the seam between panels will always be visible.

For optimal results it is important to prepare the cut and do it with the help of a metal ruler and a sharp cutter. You can also use a vinyl glue or a glue for floorings instead if wanted, as these kind of glue ensure a very strong fixation.



## Raffia and Woven fabrics Installation advises



### Panels with uncovered edges (water based glue)



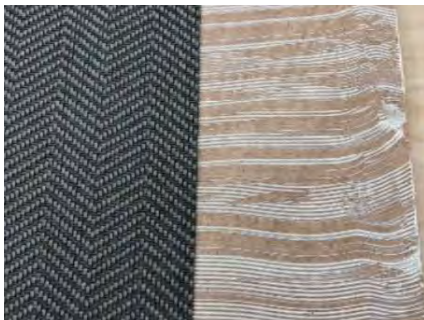
#### Glueing process:

Apply the glue with the help of a scraper and make sure that the glue is applied regularly avoiding little reliefs which would complicate the proper glueing of the covering.

Put the panel over the reference lines marked on the back of the covering.

Hold the panel firmly against the covering.

Apply the roller over all the surface in order to eliminate any possible air bubbles. First do this carefully to avoid any fabric folding and then firmly to finish glueing the covering to the panel. Apply from the center to the external perimeter.



## Raffia and Woven fabrics Installation advises



### Panels with uncovered edges (water based glue)



Make sure that the perimeter is well fixed to the base and cut the covering following the edge of the panel using a sharp cutter.



## Raffia and Woven fabrics Installation advises



### **Glued directly to wall, like a basic wall covering**

Although this is not an easy installation for this kind of fabrics, the hands of an expert could install these coverings directly on the wall. Be careful as not all kind of backings are suitable for this direct application. Should you have any doubt do not hesitate to contact the covering manufacturer first.

The process would be the same that for the panels with uncovered edges and a slow drying glue, as the typical used for floor coverings, should be used to glue the covering to the wall, so that corrections can be made while the installation process takes place.

